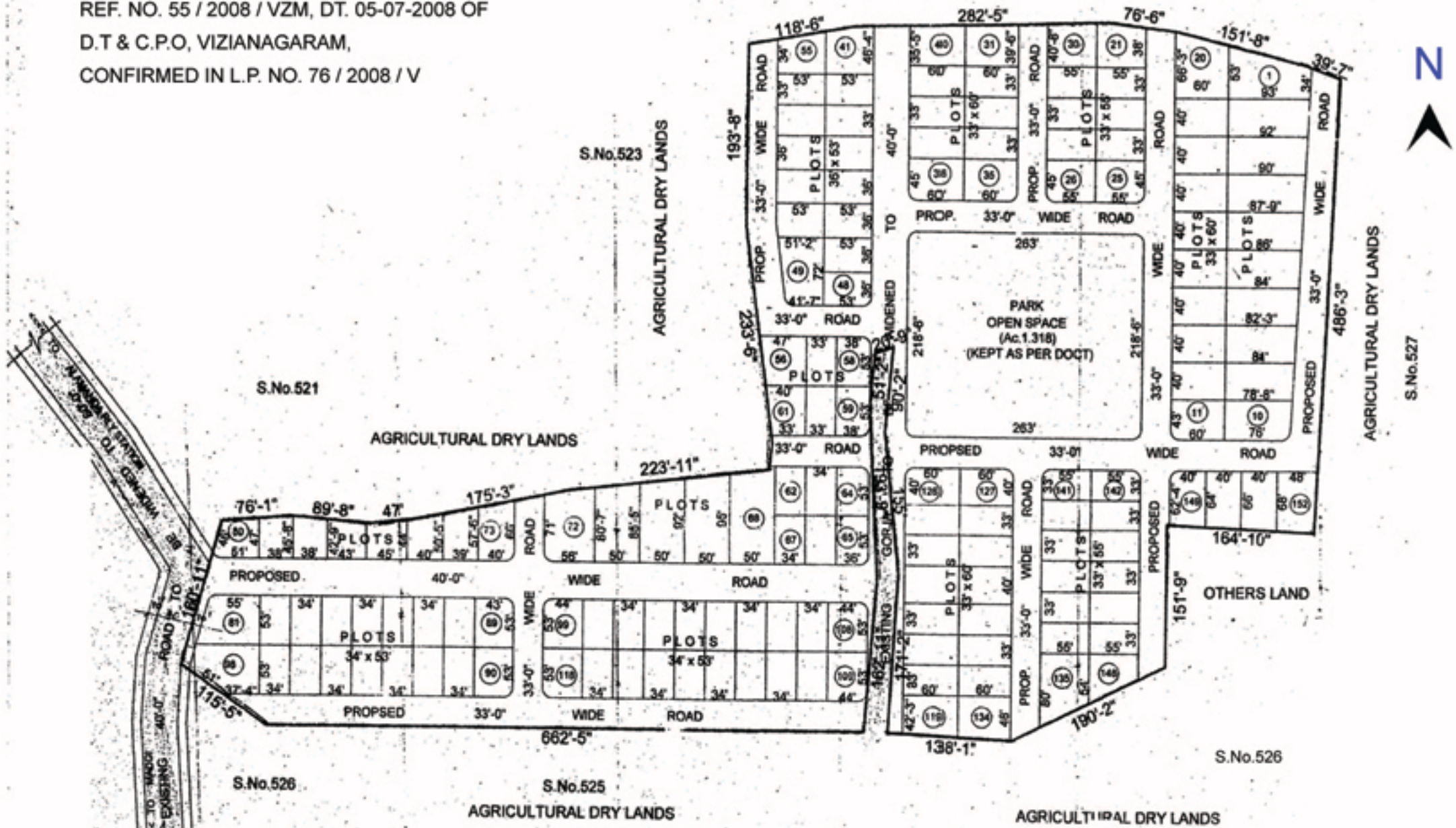


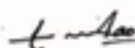


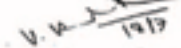

C.NO. 4625 / 2008 / V

S.No. 522 AGRICULTURAL DRY LANDS

REF. NO. 55 / 2008 / VZM, DT. 05-07-2008 OF
D.T & C.P.O, VIZIANAGARAM,
CONFIRMED IN L.P. NO. 76 / 2008 / V



ANNAMARAJU PETA GRAM PANCHAYAT
TECHNICAL LAYOUT PATTERN FOR RESIDENTIAL
PLOTS IN R.S. NOS. 513/P, 523/P & 524/P,
OF ANNAMARAJU PETA VILLAGE
JAMI MANDAL, VIZIANAGARAM DISTRICT

 SURVEYOR	 TOWN PLANNING ASSISTANT	 DEPUTY DIRECTOR (P)	 JOINT DIRECTOR (RE)	 DIRECTOR OF TOWN & COUNTRY PLANNING GOVT. OF ANDHRA PRADESH, HYDRABAD.
---	--	--	--	--